



Dubai Health Insurance
Major Diagnostic Categories - 2014
Overview and Comparison

TABLE OF CONTENTS

1. THE EXECUTIVE SUMMARY	1
1.1 Health Insurance Activities in Dubai	1
1.2 First Report	1
1.3 This Report	1
2. MAJOR DIAGNOSTIC CATAGORIES	2
2.1 The Framework	2
2.2 Beneficiaries: Overall MDC Breakdown	2
2.3 About MDCs	3
2.4 Methodology	3
2.5 Limitations	3
2.6 Beneficiaries: Top 10 MDCs	4
2.7 Providers: The Framework	5
2.8 Payers: The Framework	7
3. COMPARISON WITH OTHER COUNTRIES	8
ANNEX: WHO International Statistical Classification of Diseases	

1.1 The Health Insurance activities in Dubai

This report is the second in a series of reports to show the utilization of the healthcare system in Dubai for the claimed activities submitted through the eClaimLink system, as well as to compare the pattern over time.

The overall framework of these reports studies the economic activities of the health insurance system in Dubai at three distinct levels:

- **Beneficiaries:** who are the main focus of the healthcare system in Dubai, and the main beneficiary of the health insurance mandate.
- **Insurance companies and TPAs (Payers):** who manage the money paid by the employer or the individuals.
- **Providers:** who provide various services, such as inpatient and outpatient, at various facility types, such as hospitals, clinics and pharmacies.

1.2 First Report

The first Economic and Activities Report gave an overall view of the flow of the health insurance money, with emphasis on beneficiaries and providers. Using the Dubai reports framework, the first report showed the patterns of healthcare prices in Dubai and compared it with other countries.

1.3 This Report

The aim is to study the share of the money spent in Dubai health insurance system by disease, using an internationally renowned grouping of diseases. It shows the pattern of the expenditure by the 21 Major Diagnostic Categories (MDC), developed by the World Health Organization (WHO).

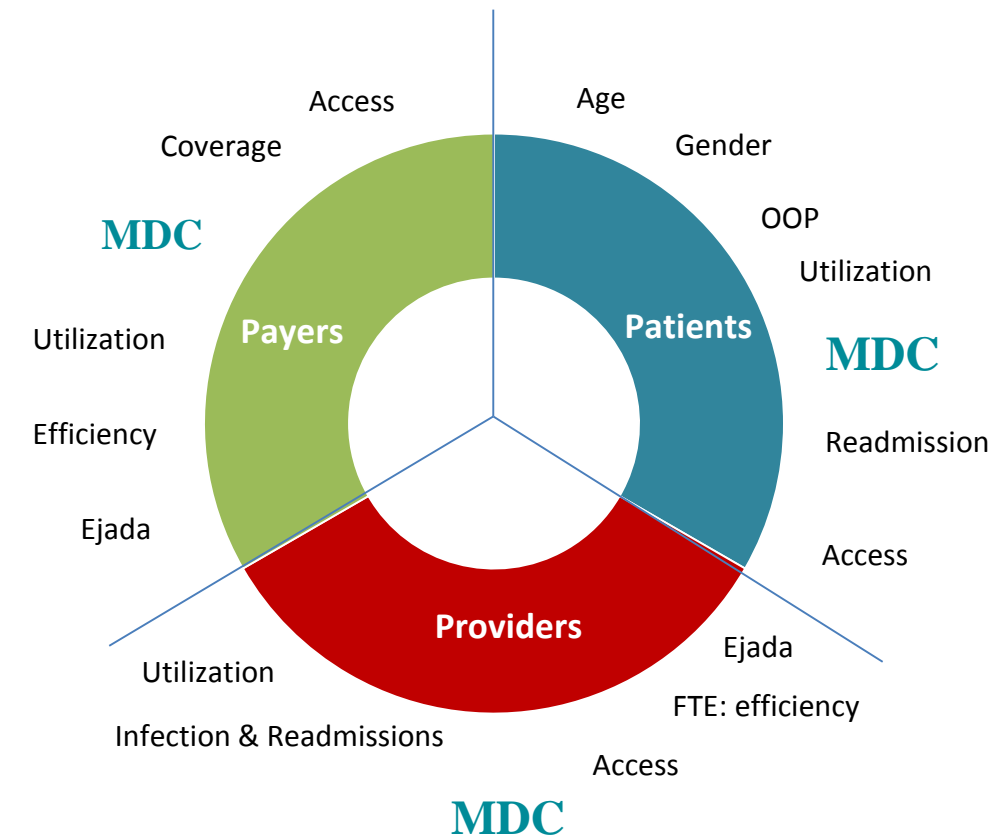


Figure 1. The overall structure of the eClaimLink Data Reporting Plan

To provide a holistic view of the health insurance system, the report then analysis these MDC at all of three levels of the framework (payers, providers, and patients).

Data for Dubai is extracted from the eClaimLink database similar to the First Report. eClaimLink stores all health insurance claims for Dubai policy holders. Dubai Health Authority (DHA).

MAJOR DIAGNOSTIC CATAGORIES

The top ten MDC's in Dubai for 2014 represent 83% of the total expenditure. Diseases of the respiratory system topped the list with 14.4%, or an equivalent of 617M AED

The Framework

The results of MDC's analysis is covering all of the three elements of the Framework: Beneficiaries, health insurance companies and TPAs, and the healthcare Providers.

For the **beneficiaries**, this report shows the detailed list of all the MDC's, as well as the breakdown of the activities performed to treat these patients: procedure, drugs, ancillary, etc.

Beneficiaries: Overall MDC Breakdown

Table 2 below shows the breakdown share of the MDC's in Dubai for 2014. The total net amount spent was 4.3 billion AED. The top ten MDC's in Dubai end with Injury, Poisoning, External Causes. They represent 83% of the total expenditure. These top ten MDC's will be used in the report to further analyze them to address the framework in more details.

The highest expenditure was on diseases of respiratory system (14.4%), followed by diseases of musculoskeletal and connective tissue (11.8%). Endocrine, nutritional and metabolic diseases had the same share in the total expenditure as the diseases of digestive system, i.e. 10.3% each. However, endocrine diseases had a higher absolute value in total expenditure (442.9 million AED vs. 442.5 million AED).

The Dubai health insurance expenditure data for 2014 had a detailed matching MDC's to the majority of the diseases, which indicates a robust coding of the diagnostics. However, still 0.5% of the money spent (20 million AED) were not matching any of the diagnostics.

Efforts should be made to ensure compliance with the coding records of all the diagnostics

MDC	Share
Respiratory system	14.4%
Musculoskeletal and Connective Tissue	11.8%
Endocrine, Nutritional and Metabolic	10.3%
Digestive System	10.3%
Not classified elsewhere	8.3%
Genitourinary System	7.2%
Circulatory System	6.9%
Factors Influencing Health Status	4.9%
Pregnancy, Childbirth & Puerperium	4.9%
Injury, Poisoning, External Causes	3.9%
Eye and Adnexa	3.2%
Skin and subcutaneous tissue	3.1%
Infectious and parasitic diseases	2.7%
Neoplasm	2.5%
Nervous System	1.9%
Ear and Mastoid Process	1.5%
Blood and blood-forming organs	1.0%
All others not specified	0.5%
Certain Conditions Originating in the Perinatal Period	0.3%
Congenital Malformations, Deformations and Chromosomal Abnormalities	0.2%
Mental & Behavioral Disorders	0.2%
External Causes of Morbidity	<0.1%
Codes for special purposes	<0.1%

Table 1. Overall split of 2014 eClaim data as a percentage of each of the 23 MDC categories. The Top 10 MDCs, highlighted, represent 82.9% of expenditure in eClaimLink

2.3 About MDC'S

Major Diagnostic Categories (MDC) are formed by dividing all possible principal diagnoses into 23 mutually exclusive diagnosis areas. Currently in Dubai we use ICD-10-CM.

The diagnoses in each MDC correspond to a single organ system or etiology and, in general, are associated with a particular medical specialty. MDC 1 to MDC 23 are grouped according to principal diagnoses. Patients are assigned to MDC 24 (Multiple Significant Trauma) with at least two significant trauma diagnosis codes (either as principal or secondary's) from different body site categories.

2.4 Methodology

The data for Major Diagnostic Categories (MDC) was extracted from eClaimLink transactions for the year 2014 using the same coding standards laid out in the International Statistical Classification of Diseases and Related Health Problems 10th Revision (ICD-10)-2015-World Health Organisation Version for ;2015.

MDC	ICD10 Code Range	ICD10 Code Range Description
Diseases of the Respiratory System	J00 – J06	Acute upper respiratory infections
	J09 – J18	Influenza and pneumonia
	J20 – J22	Other acute lower respiratory infections
	J30 – J39	Other diseases of upper respiratory tract
	J40 – J47	Chronic lower respiratory diseases
	J60 – J70	Lung diseases due to external agents
	J80 – J84	Other respiratory diseases principally affecting the interstitium
	J85 – J86	Suppurative and necrotic conditions of lower respiratory tract
	J90 – J94	Other diseases of pleura
	J95 – J99	Other diseases of the respiratory system

Table 2. The ICD10 code ranges used to extract the data for MDC – Diseases of the Respiratory System as per the International Statistical Classification of Diseases and Related Health Problems 10th Revision (ICD-10)-2015-WHO Version for ;2015

When a respiratory condition is described as occurring in more than one site and is not specifically indexed, it should be classified to the lower anatomic site (e.g., tracheobronchitis to bronchitis in J40).

Excluding:

- Certain conditions originating in the perinatal period (P00-P96)
- Certain infectious and parasitic diseases (A00-B99)
- Complications of pregnancy, childbirth and the puerperium (O00-O99)
- Congenital malformations, deformations and chromosomal abnormalities (Q00-Q99)
- Endocrine, nutritional and metabolic diseases (E00-E90)
- Injury, poisoning and certain other consequences of external causes (S00-T98)
- Neoplasms (C00-D48)
- Symptoms, signs and abnormal clinical and laboratory findings, not elsewhere classified (R00-R99)

2.5 Limitations

Despite the granularity and comprehensive data that is found in EclaimLink, and as with any study and analysis, few limitations must exist, and should be mentioned.

The first limitation is in the comparative section of this report. The data obtained is from 7 countries, and it includes all the sources of funds. In Dubai, the data is limited to the health insurance sources of funds.

Nevertheless, this limitation has minimal effect on the quality of the data and the output of this report. The insured patients that were treated for these categories are not expected to differ in their disease categories than those without insurance.

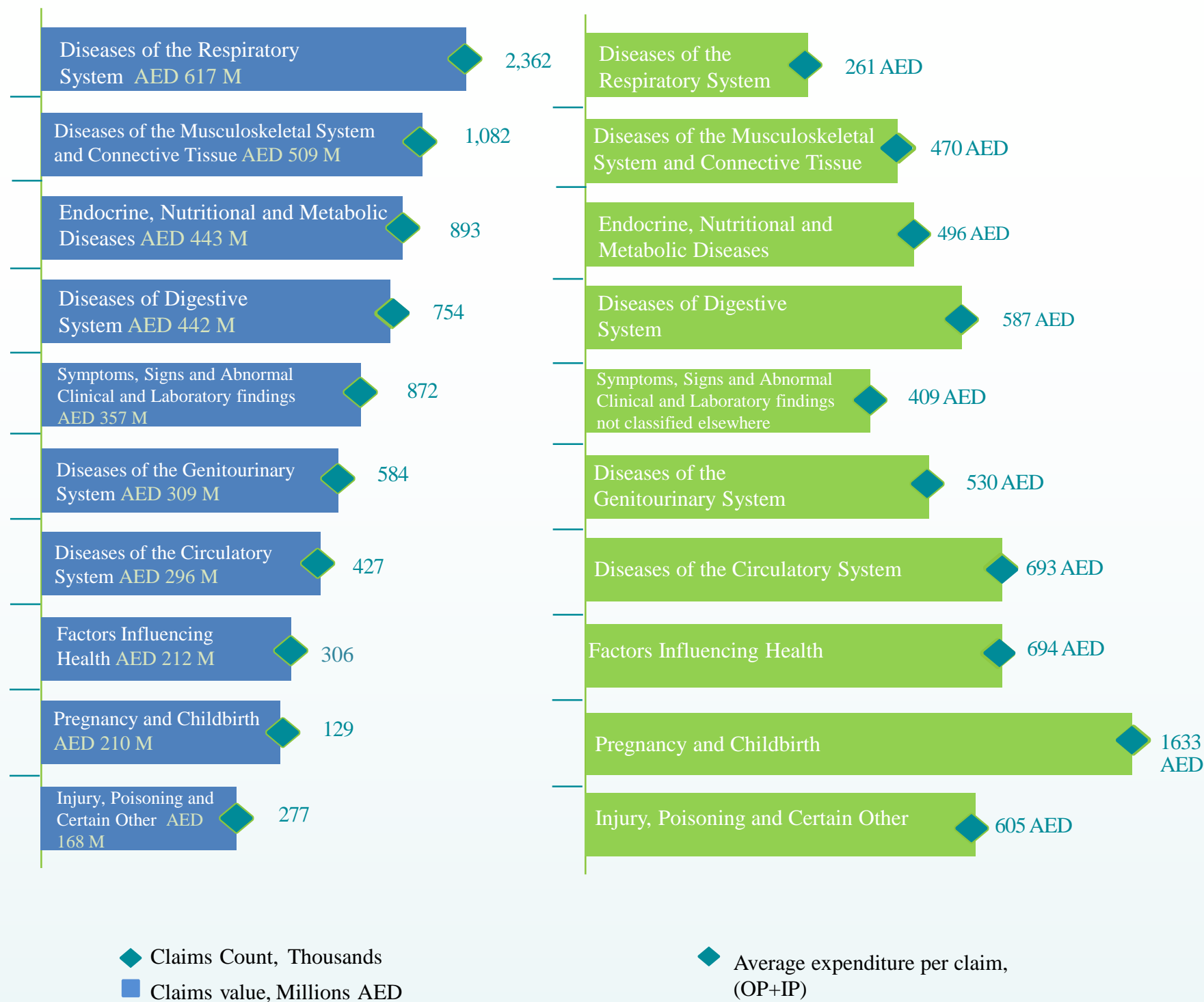


Figure 2. TOP 10 Ranked MDC's in Dubai as percentages from total claim amount in eClaimLink.

Figure 3. Biannual claims submitted in Dubai via EClaimLink system

2.6 Beneficiaries: Top 10 MDC's

The figures on the left panel show the top ten MDC's in Dubai for 2014 by two breakdowns. **Figure 2**, displays the amount spent for each of these Top 10 MDC's, as well as the number of claims submitted for each. For instance, the diseases of the respiratory system (accounted for 14% of the total expenditure) had a total expenditure of 617M AED, submitted in 2,362,000 claims.

Figure 3, shows the average cost per claim for each of these MDC's. For instance, although the total expenditure for the diseases of respiratory systems accounted for the highest amount, the average per claim for these diseases was the lowest, i.e. 261 AED. The highest average expenditure was for the pregnancy and childbirth at 1,633 AED, while this service accounted among the bottom total expenditure.

The measures on the **Figure 3** are provided to illustrate the average expenditure per claim overall, and should be considered in conjunction with the next breakdown by service type (inpatients and outpatients). Pregnancy and childbirth is the highest average simply because most of the service is provided at the inpatient settings.

2.7 Providers: The framework

For the healthcare providers, this report shows the breakdown of the categories of diseases by the type of care delivered: inpatient and outpatients.

Figure 4 shows the share of each of the top ten MDC's by type of service: inpatient and outpatient.

On average, 71% of the expenditure was for services delivered at the outpatient settings (total of 3B AED), compared to 27.6% to inpatient settings (total of 1.2B AED). The difference to 100% is in the day care settings.

Diseases of respiratory system (14% of the total expenditure, an equivalent of 617M AED) were relatively delivered more in the outpatient settings; in addition, diseases of endocrine (10.3% of the total expenditure, an equivalent of 443M AED) were mostly delivered in the outpatient settings.

In contrast, the 210M AED spent on pregnancy and childbirth were significantly higher in the inpatient settings: 76%, compared to the overall average of 27.6%. Hence, the average cost per claim is also significantly higher in this MDC.

The other MDC's were somewhat similar in their share of inpatient to outpatient to the overall average in Dubai.

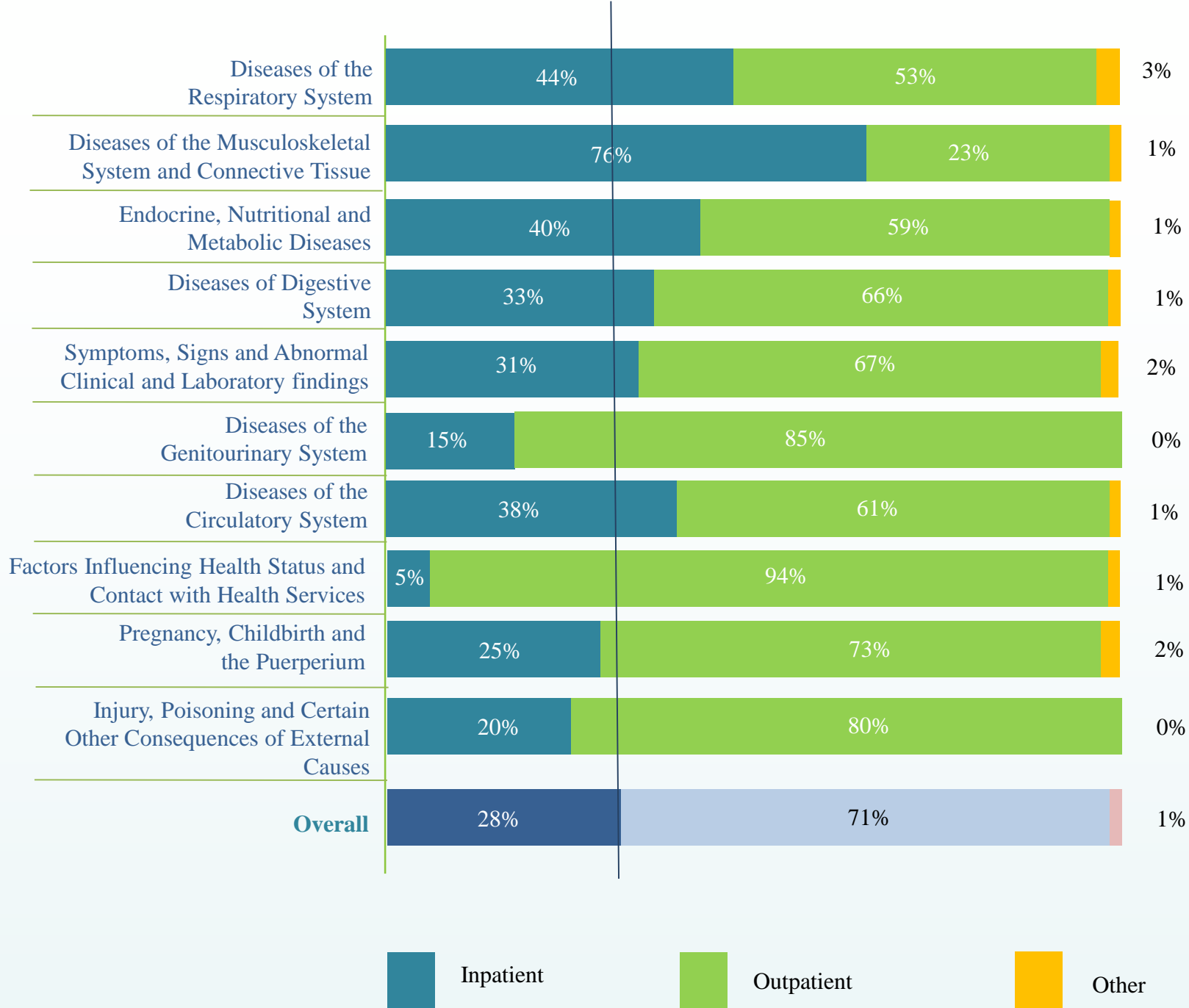


Figure 4. TOP 10 Ranked MDC's in Dubai as percentages from total claim amount in eClaimLink.

The share of healthcare expenditure for each of the MDC's is further analyzed by the type of service, separately. **Figure 5** shows the distribution of the outpatient share of expenditure (3B AED) compared to the inpatient share (1.2B AED) **Figure 6**.

The outpatient split, Figure 5 shows that 16% of the 3B AED were spent on the diseases of the respiratory system, while this share was only 10% in the inpatient graph.

Endocrine, nutritional, and metabolic diseases accounted for 14% of the 3B AED outpatient expenditure, while the same MDC accounted for only 2% of the 1.2B AED spent on inpatient.

The figures below further illustrate the share of the pregnancy and childbirth in the two types of services. This MDC accounted for 2% of the 3B AED spent on outpatient care, while it accounted for 14% of the 1.2B AED spent on inpatient care.

The other MDC's were relatively equal in their share in both outpatient and inpatient care.

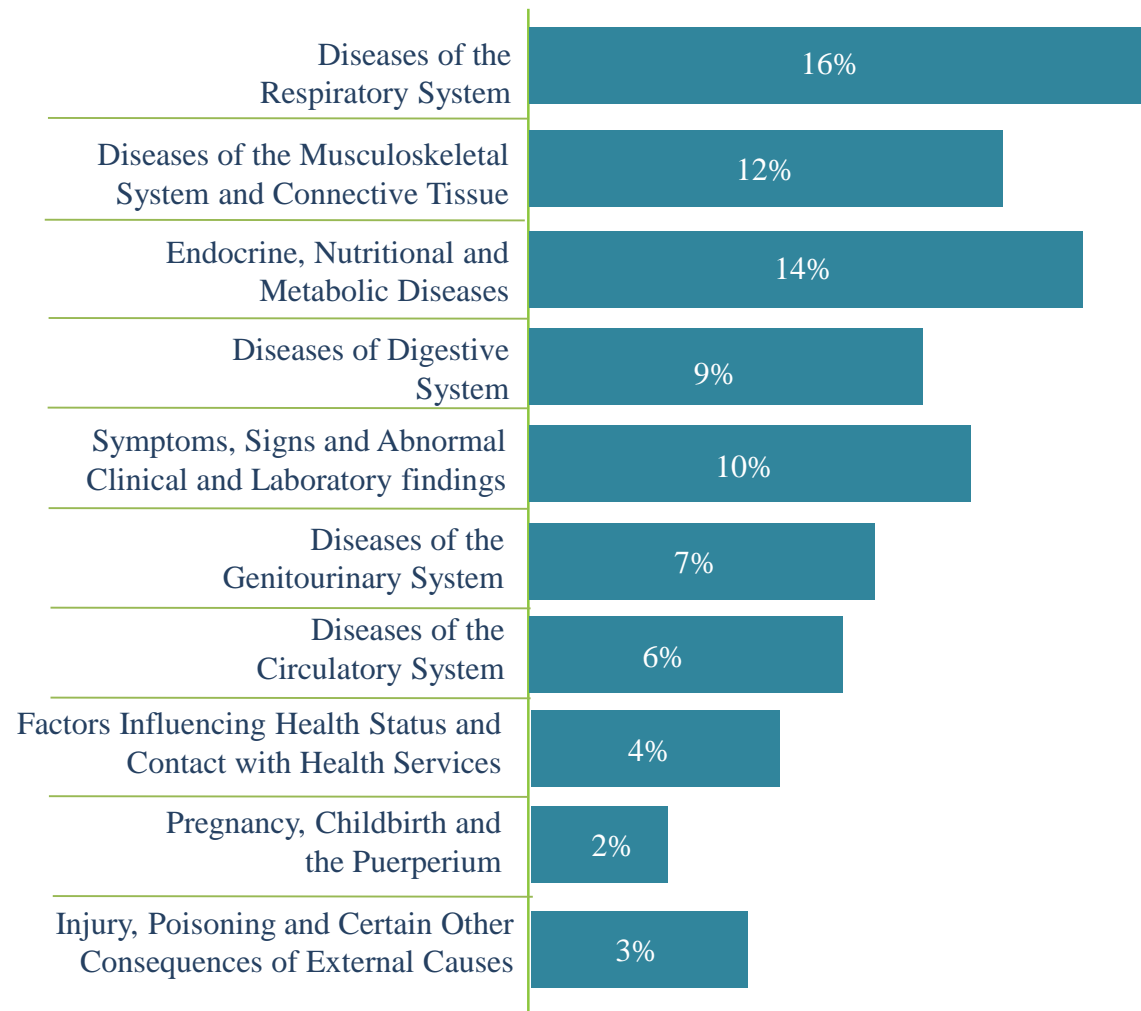


Figure 5. TOP 10 Ranked MDC's in Dubai as percentages from total OUTPATIENT claim amount in eClaimLink.

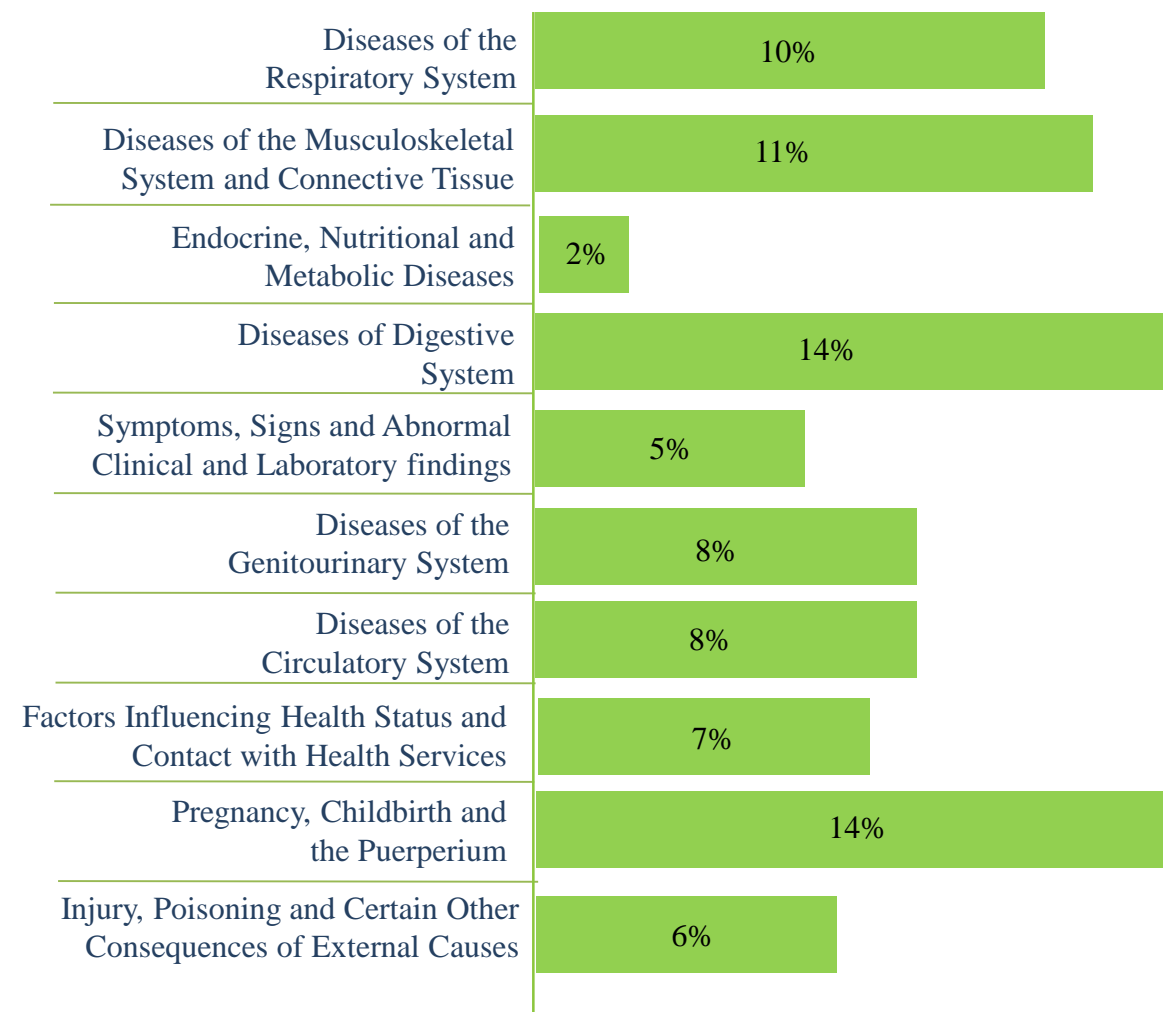


Figure 6. TOP 10 Ranked MDC's in Dubai as percentages from total INPATIENT claim amount in eClaimLink.

2.5 Payers: The Framework

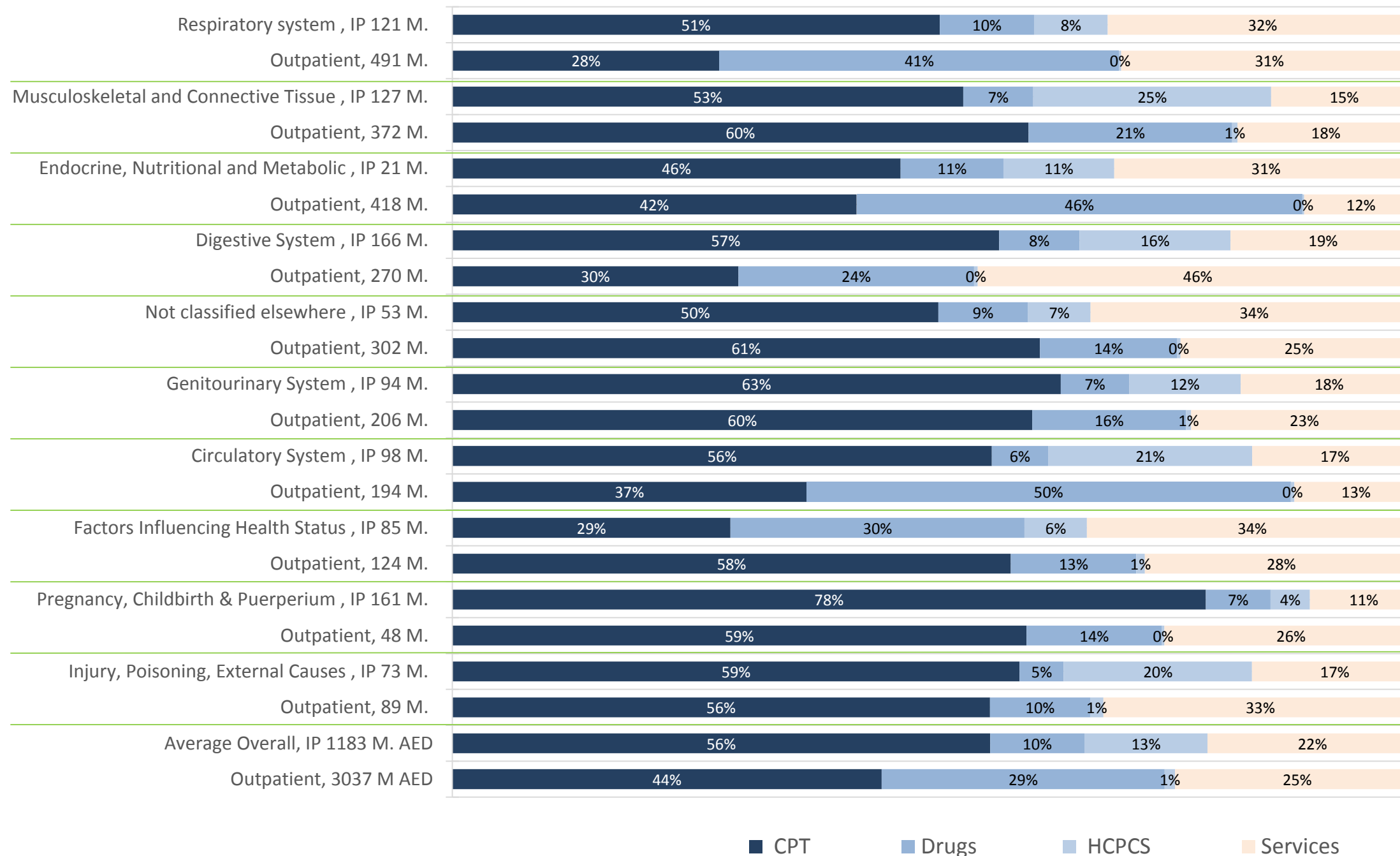
For the **health insurance** companies and TPAs, this report shows the total amounts spent for the top 10 major categories by the service type. It also compares the most common procedures in other countries to Dubai.

Figure 7 shows the results of inpatient and outpatient care for each of the top ten MDC's, by the service type, and the last two bars show the market average for all MDC's. The money spent on diseases of the respiratory system, for instance, were mainly in the outpatient care as illustrated on Graph 6, and Graph 7 shows that

for the outpatient expenditure, 28% were spent on CPT procedures (such as X-Rays), 41% on drugs, and 31% on services (such as consultations). In contrast, and for the inpatient care, a significantly higher share, 51% of the expenditure, was on CPTs, only 10% on the drugs, 8% on the consumables (HCPCS), and 32% on the services.

Endocrine care in outpatient show a significantly less share for services in outpatient compared to the market average (12% versus 25%), but a much higher share in drugs for outpatient compared to the average (46% versus 29%).

Figure 7. TOP 10 Ranked MDC's in Dubai as percentages from total claim amount in eClaimLink, by service type and breakdown



COMPARISON AGAINST OTHER COUNTRIES

Figure 8 below shows the comparison of the most common MDC's in other countries, mainly western, to Dubai. These five common diseases constituted 51% of the total inpatient hospital expenditure in the 10 countries. The same set of diseases constituted only 39% of the total expenditure in Dubai.

The last two bars show the average MDC in these countries and Dubai results.

Expenditure on injury, poisoning, and external causes in Dubai were close to the average selected countries (6% in Dubai versus 10% in the other countries). The same comparison can be noticed in musculoskeletal (11% in Dubai versus 8% in the other countries).

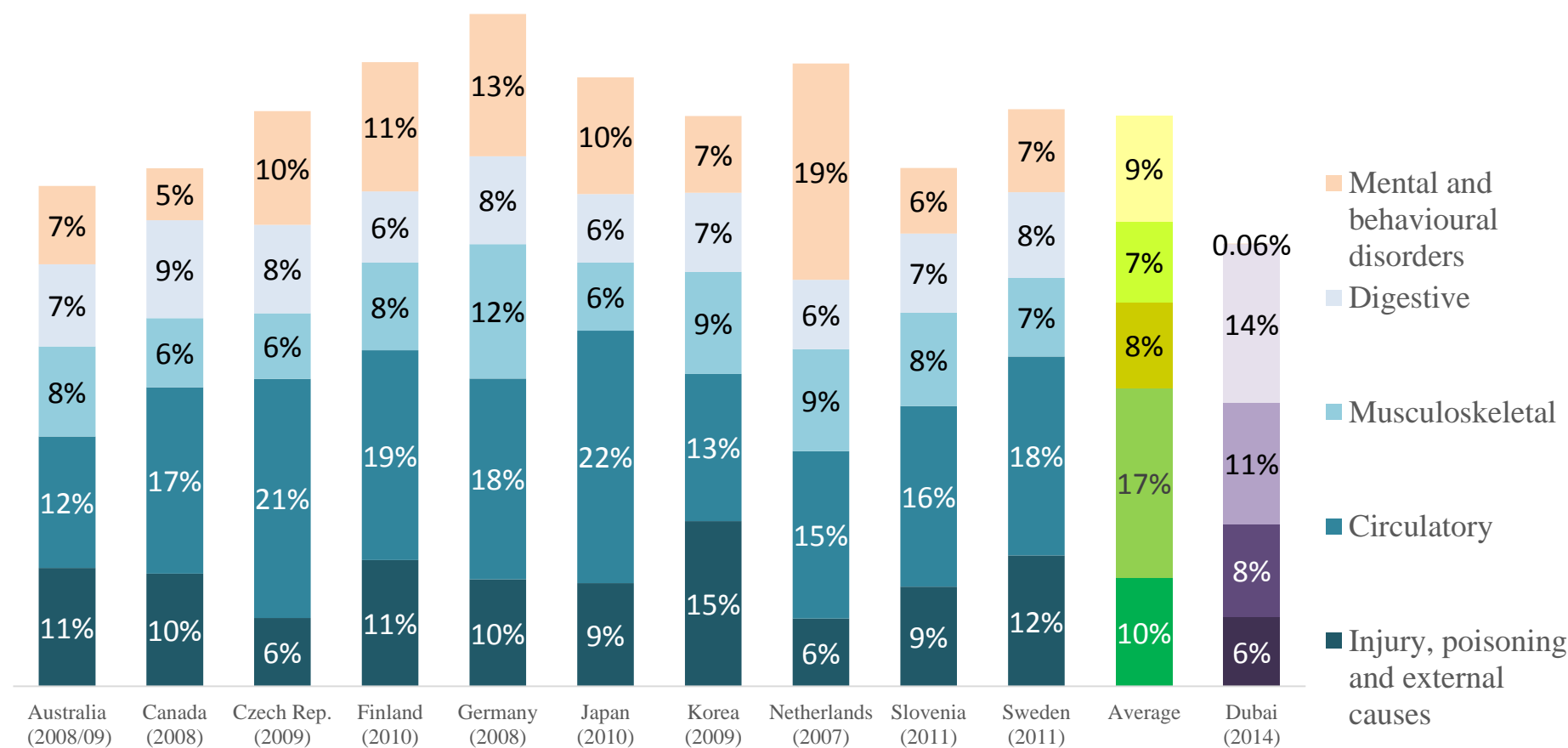
In contrast, circulatory diseases in Dubai were almost half of the inpatient expenditure when compared to these ten countries (8% versus 17%).

Also, the expenditure on digestive systems in Dubai were double the expenditure in the other countries (14% in Dubai versus 7% in the other countries).

It is also noticeable that the health insurance expenditure in Dubai for the mental and behavioural disorders is negligible compare to the other countries (less than 0.1% in Dubai compared to 9% in the other countries).

It is important to conclude this section by highlighting the limitation of the these results. The results from Dubai are for the health insurance payments only, which may not cover all the services, in particular the mental health.

Figure 8. Share of hospital in-patient spending by MDC in Dubai, selected countries and average.



Annex: International Statistical Classification of Diseases and Related Health Problems

MDC	ICD10 Code Range	Description of ICD10 Code Range
Certain infectious and parasitic diseases	<u>A00-A09</u>	Intestinal infectious diseases
	<u>A15-A19</u>	Tuberculosis
	<u>A20-A28</u>	Certain zoonotic bacterial diseases
	<u>A30-A49</u>	Other bacterial diseases
	<u>A50-A64</u>	Infections with a predominantly sexual mode of transmission
	<u>A65-A69</u>	Other spirochaetal diseases
	<u>A70-A74</u>	Other diseases caused by chlamydiae
	<u>A75-A79</u>	Rickettsioses
	<u>A80-A89</u>	Viral infections of the central nervous system
	<u>A90-A99</u>	Arthropod-borne viral fevers and viral haemorrhagic fevers
	<u>B00-B09</u>	Viral infections characterized by skin and mucous membrane lesions
	<u>B15-B19</u>	Viral hepatitis
	<u>B20-B24</u>	Human immunodeficiency virus [HIV] disease
	<u>B25-B34</u>	Other viral diseases
	<u>B35-B49</u>	Mycoses
	<u>B50-B64</u>	Protozoal diseases
	<u>B65-B83</u>	Helminthiases
	<u>B85-B89</u>	Pediculosis, acariasis and other infestations
	<u>B90-B94</u>	Sequelae of infectious and parasitic diseases
	<u>B95-B98</u>	Bacterial, viral and other infectious agents
<u>B99-B99</u>	Other infectious diseases	
Neoplasms	<u>C00-C97</u>	Malignant neoplasms
	<u>C00-C75</u>	Malignant neoplasms, stated or presumed to be primary, of specified sites, except of lymphoid, haematopoietic and related tissue
	<u>C00-C14</u>	Malignant neoplasms of lip, oral cavity and pharynx
	<u>C15-C26</u>	Malignant neoplasms of digestive organs
	<u>C30-C39</u>	Malignant neoplasms of respiratory and intrathoracic organs
	<u>C40-C41</u>	Malignant neoplasms of bone and articular cartilage
	<u>C43-C44</u>	Melanoma and other malignant neoplasms of skin
	<u>C45-C49</u>	Malignant neoplasms of mesothelial and soft tissue
	<u>C50-C50</u>	Malignant neoplasm of breast
	<u>C51-C58</u>	Malignant neoplasms of female genital organs
	<u>C60-C63</u>	Malignant neoplasms of male genital organs
	<u>C64-C68</u>	Malignant neoplasms of urinary tract
	<u>C69-C72</u>	Malignant neoplasms of eye, brain and other parts of central nervous system
	<u>C73-C75</u>	Malignant neoplasms of thyroid and other endocrine glands
	<u>C76-C80</u>	Malignant neoplasms of ill-defined, secondary and unspecified sites
	<u>C81-C96</u>	Malignant neoplasms, stated or presumed to be primary, of lymphoid, haematopoietic and related tissue
	<u>C97-C97</u>	Malignant neoplasms of independent (primary) multiple sites
	<u>D00-D09</u>	In situ neoplasms
	<u>D10-D36</u>	Benign neoplasms
	<u>D37-D48</u>	Neoplasms of uncertain or unknown behaviour

Diseases of the blood and blood-forming organs and certain disorders involving the immune mechanism	<u>D50-D53</u>	Nutritional anaemias
	<u>D55-D59</u>	Haemolytic anaemias
	<u>D60-D64</u>	Aplastic and other anaemias
	<u>D65-D69</u>	Coagulation defects, purpura and other haemorrhagic conditions
	<u>D70-D77</u>	Other diseases of blood and blood-forming organs
	<u>D80-D89</u>	Certain disorders involving the immune mechanism
Endocrine, nutritional and metabolic diseases	<u>E00-E07</u>	Disorders of thyroid gland
	<u>E10-E14</u>	Diabetes mellitus
	<u>E15-E16</u>	Other disorders of glucose regulation and pancreatic internal secretion
	<u>E20-E35</u>	Disorders of other endocrine glands
	<u>E40-E46</u>	Malnutrition
	<u>E50-E64</u>	Other nutritional deficiencies
	<u>E65-E68</u>	Obesity and other hyperalimentation
	<u>E70-E90</u>	Metabolic disorders
Mental and behavioural disorders	<u>F00-F09</u>	Organic, including symptomatic, mental disorders
	<u>F10-F19</u>	Mental and behavioural disorders due to psychoactive substance use
	<u>F20-F29</u>	Schizophrenia, schizotypal and delusional disorders
	<u>F30-F39</u>	Mood [affective] disorders
	<u>F40-F48</u>	Neurotic, stress-related and somatoform disorders
	<u>F50-F59</u>	Behavioural syndromes associated with physiological disturbances and physical factors
	<u>F60-F69</u>	Disorders of adult personality and behaviour
	<u>F70-F79</u>	Mental retardation
	<u>F80-F89</u>	Disorders of psychological development
	<u>F90-F98</u>	Behavioural and emotional disorders with onset usually occurring in childhood and adolescence
	<u>F99-F99</u>	Unspecified mental disorder
Diseases of the nervous system	<u>G00-G09</u>	Inflammatory diseases of the central nervous system
	<u>G10-G14</u>	Systemic atrophies primarily affecting the central nervous system
	<u>G20-G26</u>	Extrapyramidal and movement disorders
	<u>G30-G32</u>	Other degenerative diseases of the nervous system
	<u>G35-G37</u>	Demyelinating diseases of the central nervous system
	<u>G40-G47</u>	Episodic and paroxysmal disorders
	<u>G50-G59</u>	Nerve, nerve root and plexus disorders
	<u>G60-G64</u>	Polyneuropathies and other disorders of the peripheral nervous system
	<u>G70-G73</u>	Diseases of myoneural junction and muscle
	<u>G80-G83</u>	Cerebral palsy and other paralytic syndromes
<u>G90-G99</u>	Other disorders of the nervous system	
Diseases of the eye and adnexa	<u>H00-H06</u>	Disorders of eyelid, lacrimal system and orbit
	<u>H10-H13</u>	Disorders of conjunctiva
	<u>H15-H22</u>	Disorders of sclera, cornea, iris and ciliary body
	<u>H25-H28</u>	Disorders of lens
	<u>H30-H36</u>	Disorders of choroid and retina

Annex Cont...

MDC	ICD10 Code Range	Description of ICD10 Code Range
Diseases of the eye and adnexa	<u>H40-H42</u>	Glaucoma
	<u>H43-H45</u>	Disorders of vitreous body and globe
	<u>H46-H48</u>	Disorders of optic nerve and visual pathways
	<u>H49-H52</u>	Disorders of ocular muscles, binocular movement, accommodation and refraction
	<u>H53-H54</u>	Visual disturbances and blindness
	<u>H55-H59</u>	Other disorders of eye and adnexa
	Diseases of the ear and mastoid process	<u>H60-H62</u>
<u>H65-H75</u>		Diseases of middle ear and mastoid
<u>H80-H83</u>		Diseases of inner ear
<u>H90-H95</u>		Other disorders of ear
Diseases of the circulatory system	<u>I00-I02</u>	Acute rheumatic fever
	<u>I05-I09</u>	Chronic rheumatic heart diseases
	<u>I10-I15</u>	Hypertensive diseases
	<u>I20-I25</u>	Ischaemic heart diseases
	<u>I26-I28</u>	Pulmonary heart disease and diseases of pulmonary circulation
	<u>I30-I52</u>	Other forms of heart disease
	<u>I60-I69</u>	Cerebrovascular diseases
	<u>I70-I79</u>	Diseases of arteries, arterioles and capillaries
	<u>I80-I89</u>	Diseases of veins, lymphatic vessels and lymph nodes, not elsewhere classified
	<u>I95-I99</u>	Other and unspecified disorders of the circulatory system
Diseases of the respiratory system	<u>J00-J06</u>	Acute upper respiratory infections
	<u>J09-J18</u>	Influenza and pneumonia
	<u>J20-J22</u>	Other acute lower respiratory infections
	<u>J30-J39</u>	Other diseases of upper respiratory tract
	<u>J40-J47</u>	Chronic lower respiratory diseases
	<u>J60-J70</u>	Lung diseases due to external agents
	<u>J80-J84</u>	Other respiratory diseases principally affecting the interstitium
	<u>J85-J86</u>	Suppurative and necrotic conditions of lower respiratory tract
	<u>J90-J94</u>	Other diseases of pleura
<u>J95-J99</u>	Other diseases of the respiratory system	
Diseases of the digestive system	<u>K00-K14</u>	Diseases of oral cavity, salivary glands and jaws
	<u>K20-K31</u>	Diseases of oesophagus, stomach and duodenum
	<u>K35-K38</u>	Diseases of appendix
	<u>K40-K46</u>	Hernia
	<u>K50-K52</u>	Noninfective enteritis and colitis
	<u>K55-K64</u>	Other diseases of intestines
	<u>K65-K67</u>	Diseases of peritoneum
	<u>K70-K77</u>	Diseases of liver
	<u>K80-K87</u>	Disorders of gallbladder, biliary tract and pancreas
<u>K90-K93</u>	Other diseases of the digestive system	

MDC	ICD10 Code Range	Description of ICD10 Code Range
Diseases of the skin and subcutaneous tissue	<u>L00-L08</u>	Infections of the skin and subcutaneous tissue
	<u>L10-L14</u>	Bullous disorders
	<u>L20-L30</u>	Dermatitis and eczema
	<u>L40-L45</u>	Papulosquamous disorders
	<u>L50-L54</u>	Urticaria and erythema
	<u>L55-L59</u>	Radiation-related disorders of the skin and subcutaneous tissue
	<u>L60-L75</u>	Disorders of skin appendages
	<u>L80-L99</u>	Other disorders of the skin and subcutaneous tissue
Diseases of the musculoskeletal system and connective tissue	<u>M00-M25</u>	Arthropathies
	<u>M00-M03</u>	Infectious arthropathies
	<u>M05-M14</u>	Inflammatory polyarthropathies
	<u>M15-M19</u>	Arthrosis
	<u>M20-M25</u>	Other joint disorders
	<u>M30-M36</u>	Systemic connective tissue disorders
	<u>M40-M54</u>	Dorsopathies
	<u>M40-M43</u>	Deforming dorsopathies
	<u>M45-M49</u>	Spondylopathies
	<u>M50-M54</u>	Other dorsopathies
	<u>M60-M79</u>	Soft tissue disorders
	<u>M60-M63</u>	Disorders of muscles
	<u>M65-M68</u>	Disorders of synovium and tendon
	<u>M70-M79</u>	Other soft tissue disorders
	<u>M80-M94</u>	Osteopathies and chondropathies
	<u>M80-M85</u>	Disorders of bone density and structure
	<u>M86-M90</u>	Other osteopathies
	<u>M91-M94</u>	Chondropathies
	<u>M95-M99</u>	Other disorders of the musculoskeletal system and connective tissue
Diseases of the genitourinary system	<u>N00-N08</u>	Glomerular diseases
	<u>N10-N16</u>	Renal tubulo-interstitial diseases
	<u>N17-N19</u>	Renal failure
	<u>N20-N23</u>	Urolithiasis
	<u>N25-N29</u>	Other disorders of kidney and ureter
	<u>N30-N39</u>	Other diseases of urinary system
	<u>N40-N51</u>	Diseases of male genital organs
	<u>N60-N64</u>	Disorders of breast
	<u>N70-N77</u>	Inflammatory diseases of female pelvic organs
	<u>N80-N98</u>	Noninflammatory disorders of female genital tract
<u>N99-N99</u>	Other disorders of the genitourinary system	
Pregnancy, childbirth and the puerperium	<u>O00-O08</u>	Pregnancy with abortive outcome
	<u>O10-O16</u>	Oedema, proteinuria and hypertensive disorders in pregnancy, childbirth and the puerperium
	<u>O20-O29</u>	Other maternal disorders predominantly related to pregnancy
	<u>O30-O48</u>	Maternal care related to the fetus and amniotic cavity and possible delivery problems

Annex Cont...

MDC	ICD10 Code Range	Description of ICD10 Code Range	
Pregnancy, childbirth and the puerperium	<u>O60-O75</u>	Complications of labour and delivery	
	<u>O80-O84</u>	Delivery	
	<u>O85-O92</u>	Complications predominantly related to the puerperium	
	<u>O94-O99</u>	Other obstetric conditions, not elsewhere classified	
Certain conditions originating in the perinatal period	<u>P00-P04</u>	Fetus and newborn affected by maternal factors and by complications of pregnancy, labour and delivery	
	<u>P05-P08</u>	Disorders related to length of gestation and fetal growth	
	<u>P10-P15</u>	Birth trauma	
	<u>P20-P29</u>	Respiratory and cardiovascular disorders specific to the perinatal period	
	<u>P35-P39</u>	Infections specific to the perinatal period	
	<u>P50-P61</u>	Haemorrhagic and haematological disorders of fetus and newborn	
	<u>P70-P74</u>	Transitory endocrine and metabolic disorders specific to fetus and newborn	
	<u>P75-P78</u>	Digestive system disorders of fetus and newborn	
	<u>P80-P83</u>	Conditions involving the integument and temperature regulation of fetus and newborn	
	<u>P90-P96</u>	Other disorders originating in the perinatal period	
Congenital malformations, deformations and chromosomal abnormalities	<u>Q00-Q07</u>	Congenital malformations of the nervous system	
	<u>Q10-Q18</u>	Congenital malformations of eye, ear, face and neck	
	<u>Q20-Q28</u>	Congenital malformations of the circulatory system	
	<u>Q30-Q34</u>	Congenital malformations of the respiratory system	
	<u>Q35-Q37</u>	Cleft lip and cleft palate	
	<u>Q38-Q45</u>	Other congenital malformations of the digestive system	
	<u>Q50-Q56</u>	Congenital malformations of genital organs	
	<u>Q60-Q64</u>	Congenital malformations of the urinary system	
	<u>Q65-Q79</u>	Congenital malformations and deformations of the musculoskeletal system	
	<u>Q80-Q89</u>	Other congenital malformations	
	<u>Q90-Q99</u>	Chromosomal abnormalities, not elsewhere classified	
	Symptoms, signs and abnormal clinical and laboratory findings, not elsewhere classified	<u>R00-R09</u>	Symptoms and signs involving the circulatory and respiratory systems
		<u>R10-R19</u>	Symptoms and signs involving the digestive system and abdomen
<u>R20-R23</u>		Symptoms and signs involving the skin and subcutaneous tissue	
<u>R25-R29</u>		Symptoms and signs involving the nervous and musculoskeletal systems	
<u>R30-R39</u>		Symptoms and signs involving the urinary system	
<u>R40-R46</u>		Symptoms and signs involving cognition, perception, emotional state and behaviour	
<u>R47-R49</u>		Symptoms and signs involving speech and voice	
<u>R50-R69</u>		General symptoms and signs	
<u>R70-R79</u>		Abnormal findings on examination of blood, without diagnosis	
<u>R80-R82</u>		Abnormal findings on examination of urine, without diagnosis	
<u>R83-R89</u>		Abnormal findings on examination of other body fluids, substances and tissues, without diagnosis	

MDC	ICD10 Code Range	Description of ICD10 Code Range
Symptoms, signs and abnormal clinical and laboratory findings, not elsewhere classified	<u>R90-R94</u>	Abnormal findings on diagnostic imaging and in function studies, without diagnosis
	<u>R95-R99</u>	Ill-defined and unknown causes of mortality
Injury, poisoning and certain other consequences of external causes	<u>S00-S09</u>	Injuries to the head
	<u>S10-S19</u>	Injuries to the neck
	<u>S20-S29</u>	Injuries to the thorax
	<u>S30-S39</u>	Injuries to the abdomen, lower back, lumbar spine and pelvis
	<u>S40-S49</u>	Injuries to the shoulder and upper arm
	<u>S50-S59</u>	Injuries to the elbow and forearm
	<u>S60-S69</u>	Injuries to the wrist and hand
	<u>S70-S79</u>	Injuries to the hip and thigh
	<u>S80-S89</u>	Injuries to the knee and lower leg
	<u>S90-S99</u>	Injuries to the ankle and foot
	<u>T00-T07</u>	Injuries involving multiple body regions
	<u>T08-T14</u>	Injuries to unspecified part of trunk, limb or body region
	<u>T15-T19</u>	Effects of foreign body entering through natural orifice
	<u>T20-T32</u>	Burns and corrosions
	<u>T20-T25</u>	Burns and corrosions of external body surface, specified by site
	<u>T26-T28</u>	Burns and corrosions confined to eye and internal organs
	<u>T29-T32</u>	Burns and corrosions of multiple and unspecified body regions
	<u>T33-T35</u>	Frostbite
	<u>T36-T50</u>	Poisoning by drugs, medicaments and biological substances
	<u>T51-T65</u>	Toxic effects of substances chiefly nonmedicinal as to source
<u>T66-T78</u>	Other and unspecified effects of external causes	
<u>T79-T79</u>	Certain early complications of trauma	
<u>T80-T88</u>	Complications of surgical and medical care, not elsewhere classified	
<u>T90-T98</u>	Sequelae of injuries, of poisoning and of other consequences of external causes	
External causes of morbidity and mortality	<u>V01-V09</u>	Pedestrian injured in transport accident
	<u>V10-V19</u>	Pedal cyclist injured in transport accident
	<u>V20-V29</u>	Motorcycle rider injured in transport accident
	<u>V30-V39</u>	Occupant of three-wheeled motor vehicle injured in transport accident
	<u>V40-V49</u>	Car occupant injured in transport accident
	<u>V50-V59</u>	Occupant of pick-up truck or van injured in transport accident
	<u>V60-V69</u>	Occupant of heavy transport vehicle injured in transport accident
	<u>V70-V79</u>	Bus occupant injured in transport accident
	<u>V80-V89</u>	Other land transport accidents
	<u>V90-V94</u>	Water transport accidents
	<u>V95-V97</u>	Air and space transport accidents
	<u>V98-V99</u>	Other and unspecified transport accidents

Annex Cont...

MDC	ICD10 Code Range	Description of ICD10 Code Range
External causes of morbidity and mortality	<u>W00-W19</u>	Falls
	<u>W20-W49</u>	Exposure to inanimate mechanical forces
	<u>W50-W64</u>	Exposure to animate mechanical forces
	<u>W65-W74</u>	Accidental drowning and submersion
	<u>W75-W84</u>	Other accidental threats to breathing
	<u>W85-W99</u>	Exposure to electric current, radiation and extreme ambient air temperature and pressure
	<u>X00-X09</u>	Exposure to smoke, fire and flames
	<u>X10-X19</u>	Contact with heat and hot substances
	<u>X20-X29</u>	Contact with venomous animals and plants
	<u>X30-X39</u>	Exposure to forces of nature
	<u>X40-X49</u>	Accidental poisoning by and exposure to noxious substances
	<u>X50-X57</u>	Overexertion, travel and privation
	<u>X58-X59</u>	Accidental exposure to other and unspecified factors
Factors influencing health status and contact with health services	<u>Z00-Z13</u>	Persons encountering health services for examination and investigation
	<u>Z20-Z29</u>	Persons with potential health hazards related to communicable diseases
	<u>Z30-Z39</u>	Persons encountering health services in circumstances related to reproduction
	<u>Z40-Z54</u>	Persons encountering health services for specific procedures and health care
	<u>Z55-Z65</u>	Persons with potential health hazards related to socioeconomic and psychosocial circumstances
	<u>Z70-Z76</u>	Persons encountering health services in other circumstances
	<u>Z80-Z99</u>	Persons with potential health hazards related to family and personal history and certain conditions influencing health status
Codes for special purposes	<u>U00-U49</u>	Provisional assignment of new diseases of uncertain etiology or emergency use
	<u>U82-U85</u>	Resistance to antimicrobial and antineoplastic drugs